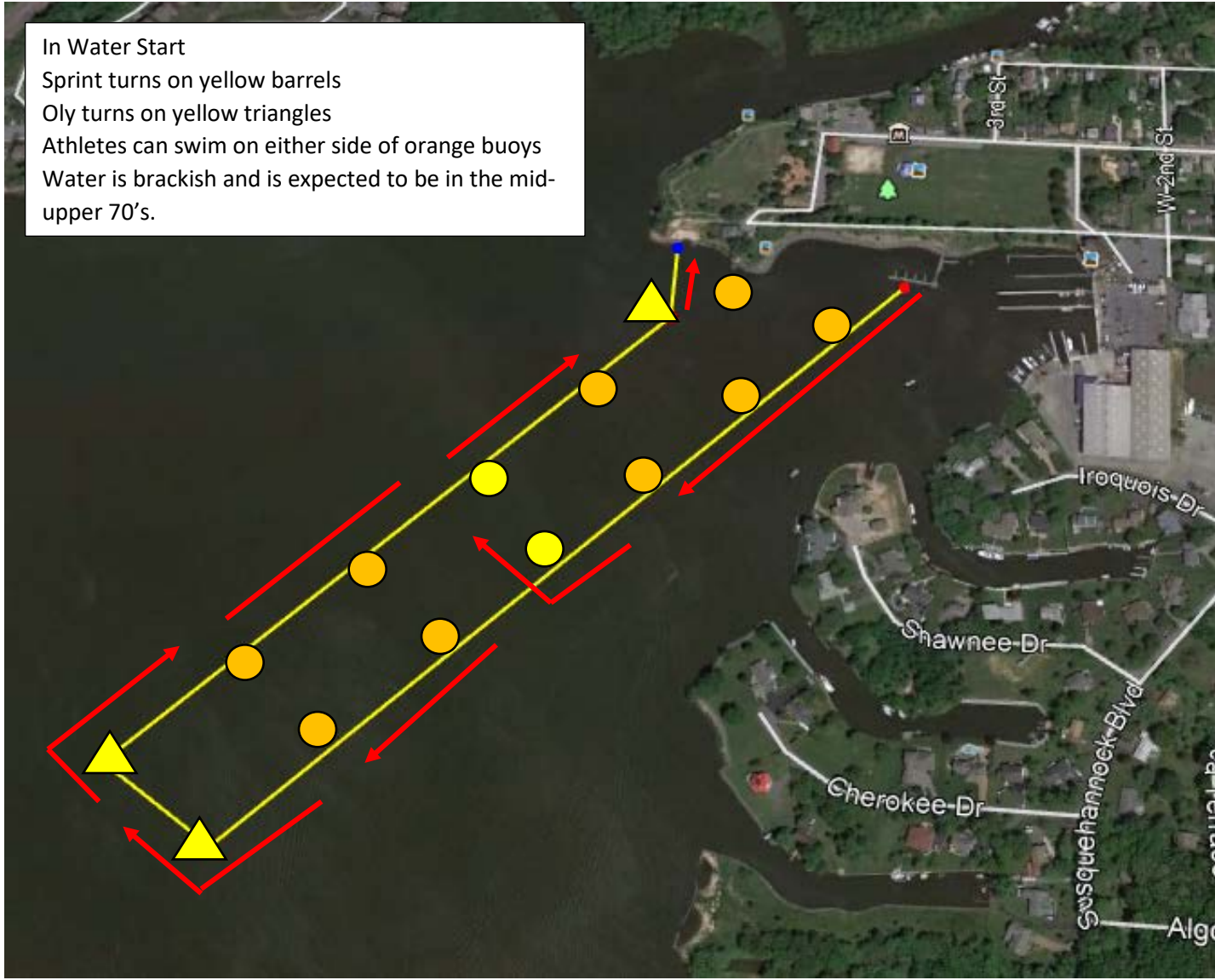
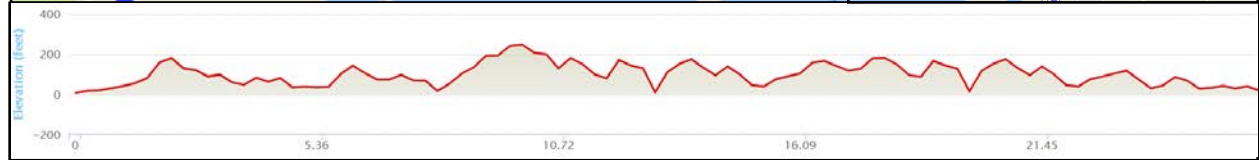
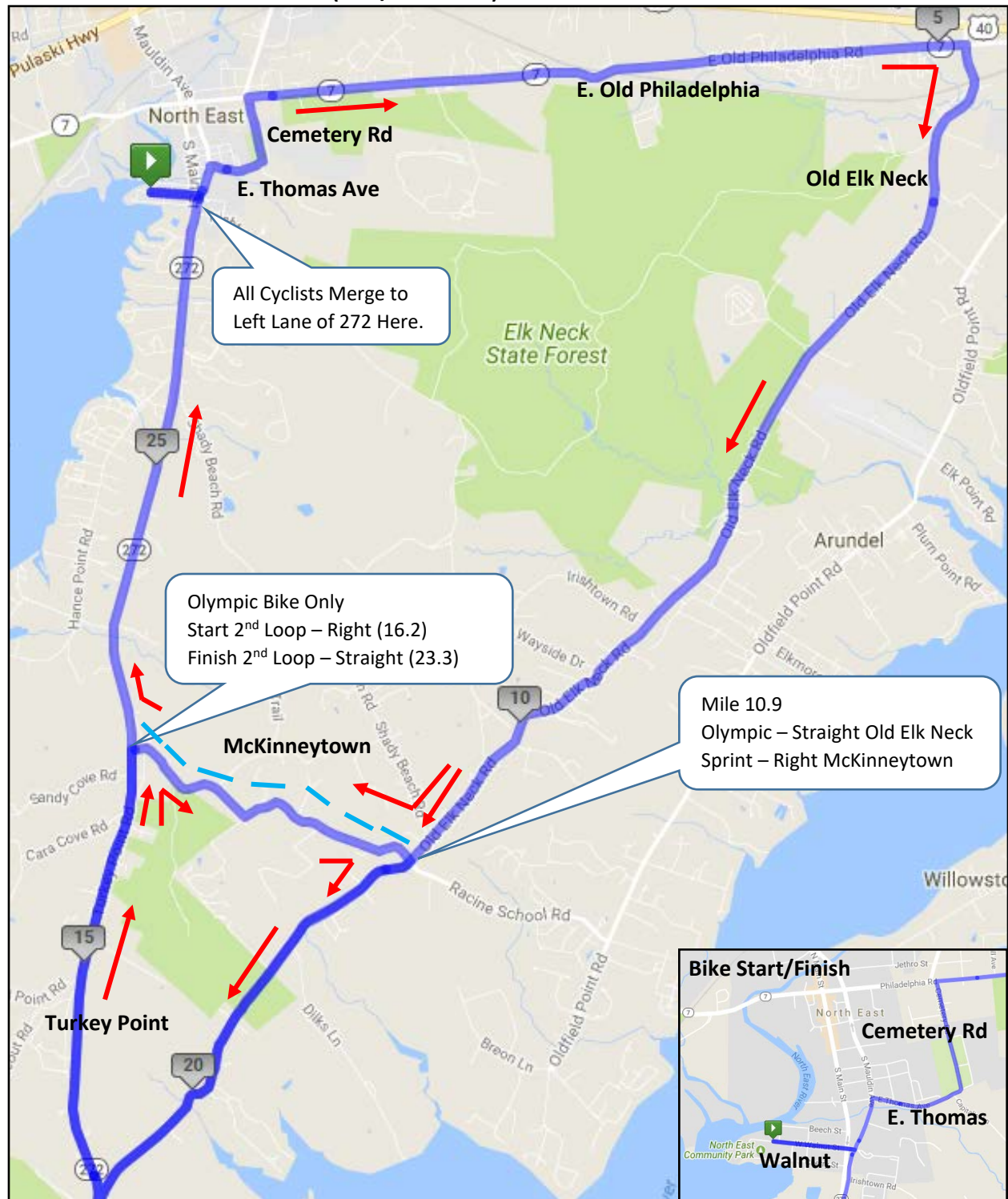


North East Triathlon Swim Course_1500/750 Meters

In Water Start
Sprint turns on yellow barrels
Oly turns on yellow triangles
Athletes can swim on either side of orange buoys
Water is brackish and is expected to be in the mid-upper 70's.



North East Triathlon Bike Course (26.8/16.1 Miles)



North East Run Course_6.2/3.1 miles

Mostly Flat Run Course
Water/Gatorade available every mile
Course is all on pavement, is rolling,
and has little to no shade.

