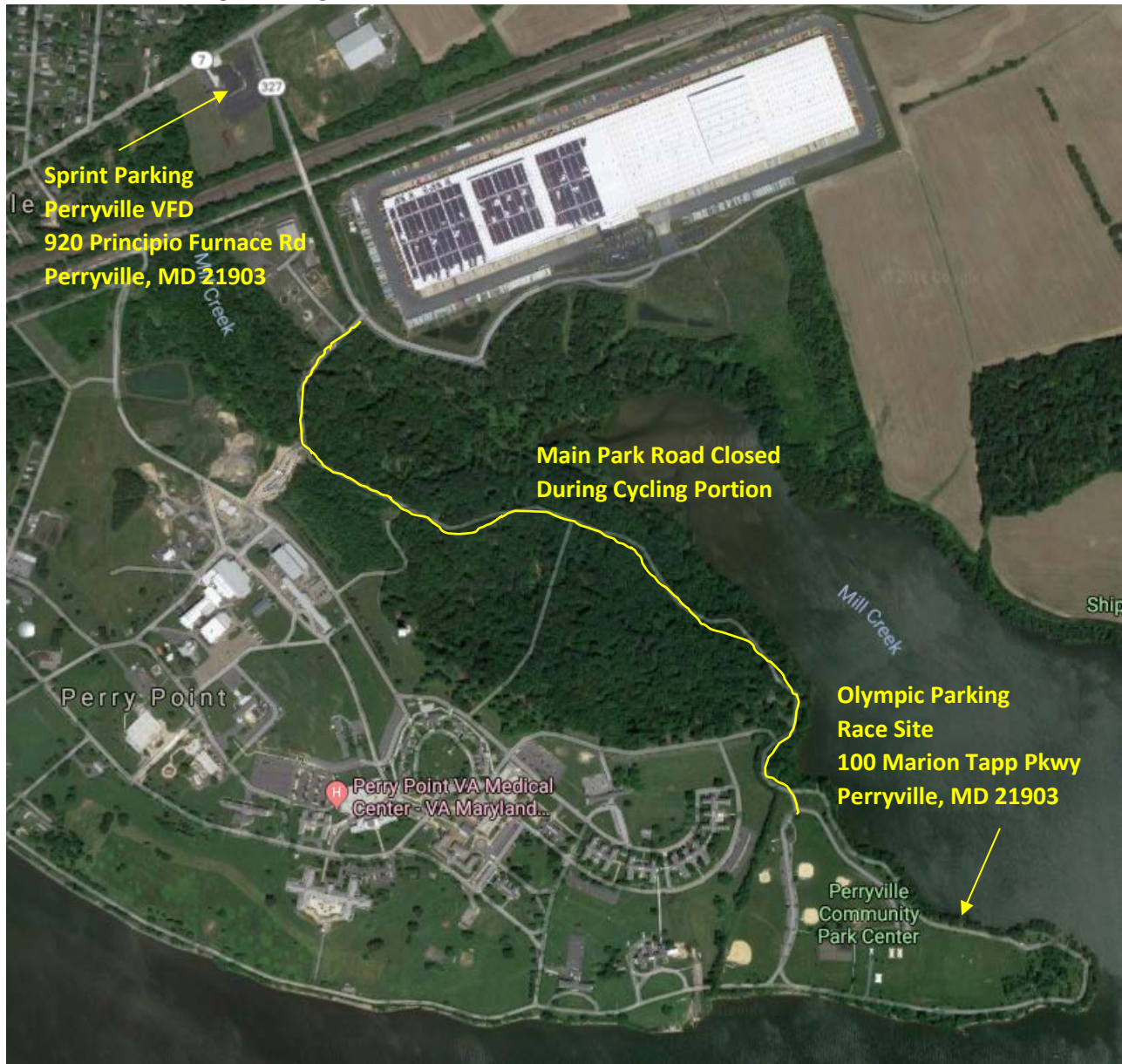


## Diamond in the Rough Parking



Thank you for choosing the Diamond in the Rough Triathlon! This is a great event at the top of the Chesapeake Bay brought to you in partnership with the Town of Perryville and Cecil County. As with all races there are some logistics to master to make your day a success. For this race, parking in the correct location is critical. The main road leading into the park is rather narrow and is not safe for cars and bikes at the same time, so the road is **CLOSED** until all the bikes are in. The Sprint race starts first at 7:30AM, so Sprint athletes will be DONE prior to all the Olympic cyclists being in, at approximately 10:45AM. So, if you would like to leave PRIOR to 10:45 AM, park at the fire house located about a mile from the race site and ride/walk in. Lastly, if you park at the race site please follow the direction of our parking volunteers and park only in paved spaces, not on the grass.