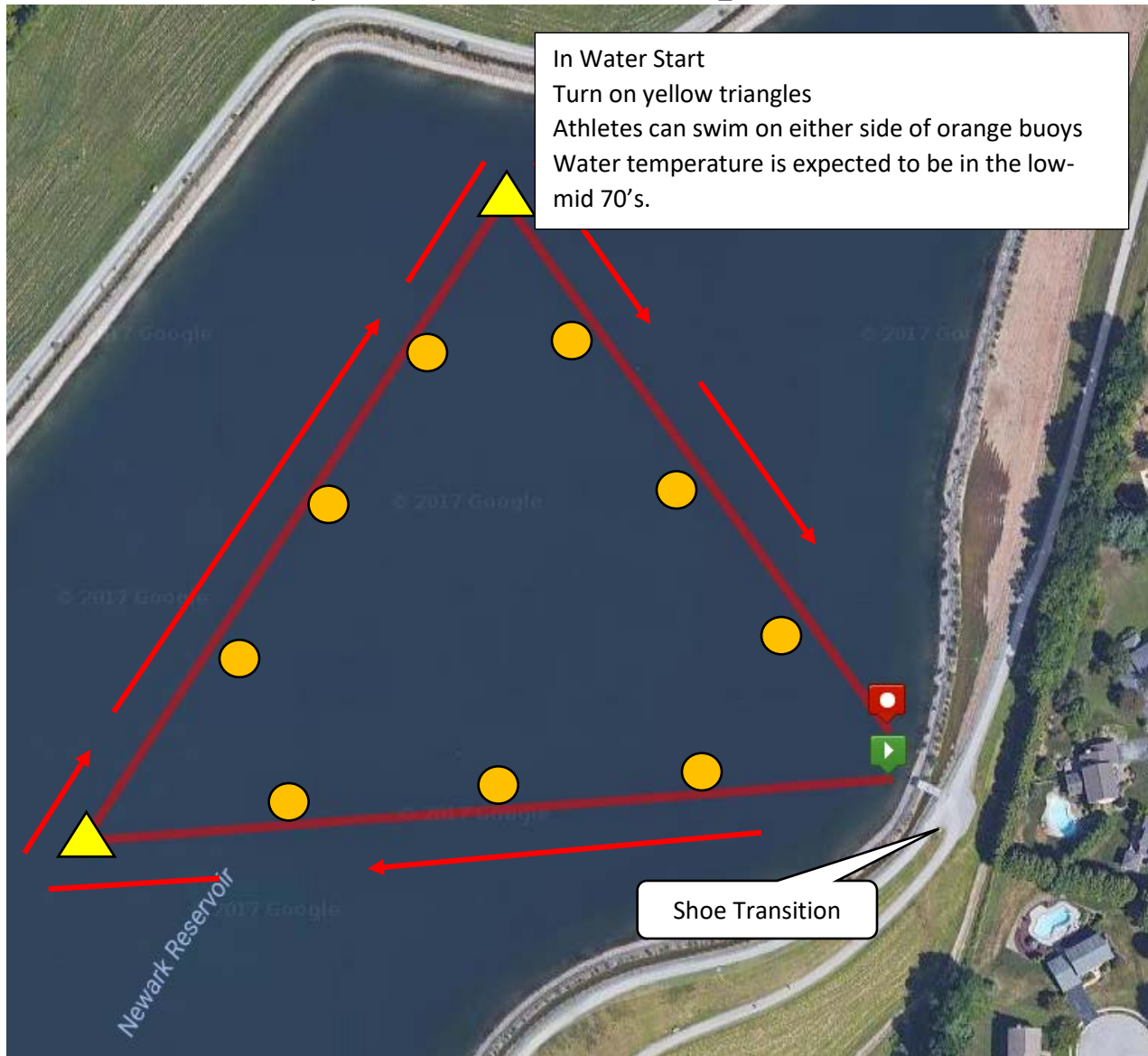


Top of Delaware Triathlon Swim Course_750 Meters

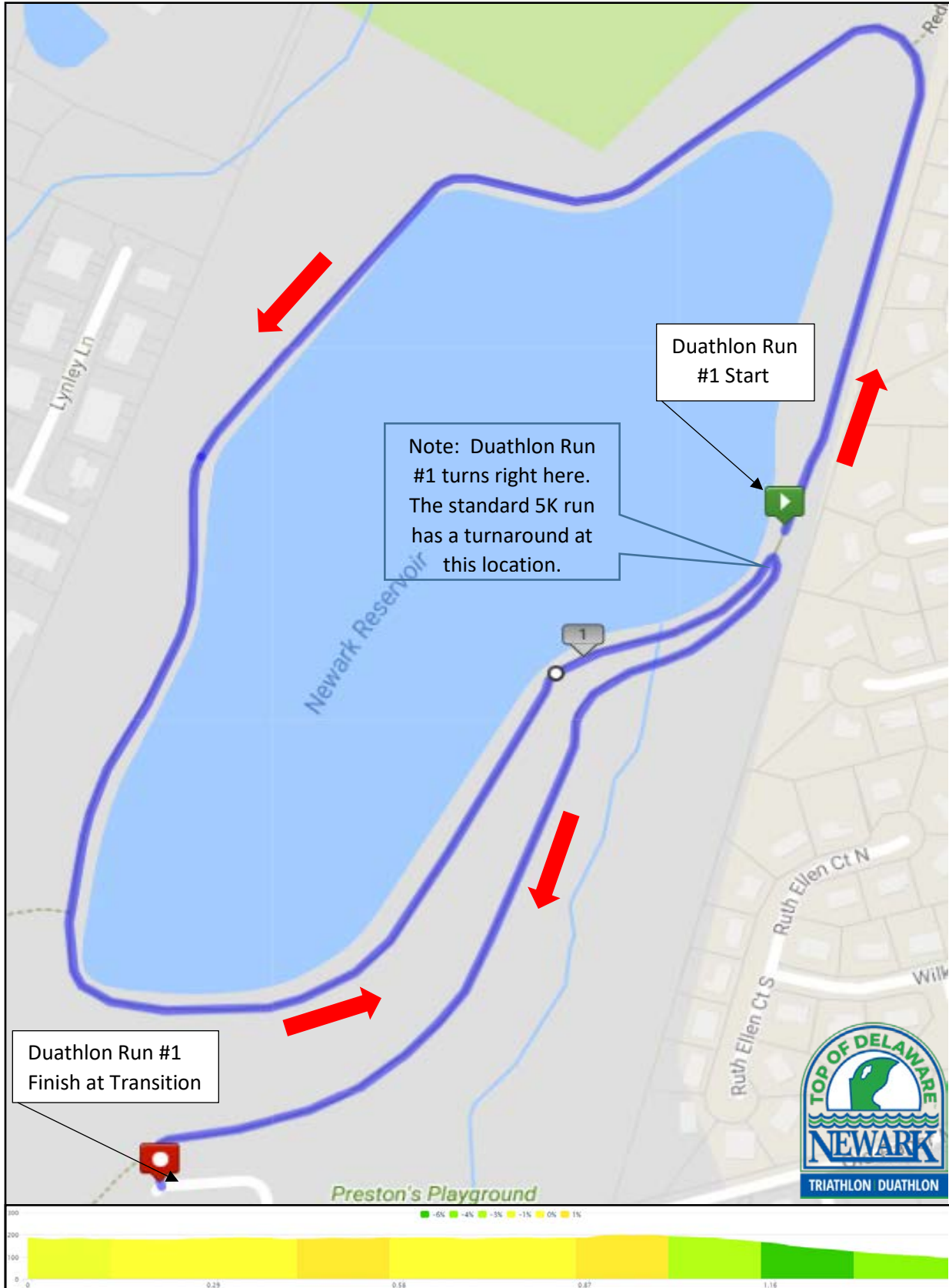


Please Note!

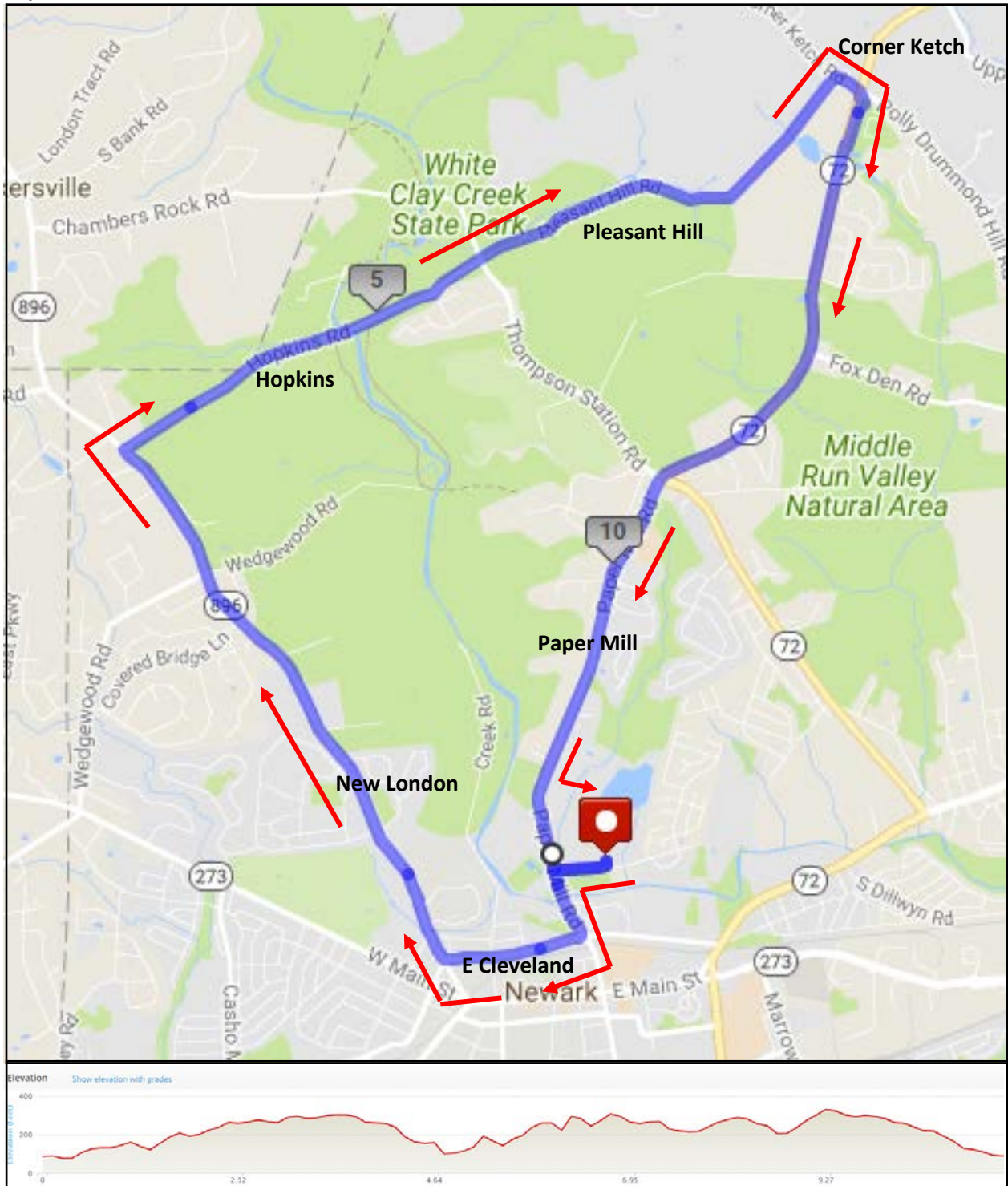
The Top of Delaware venue is located at the Newark Reservoir. Therefore, it is imperative that the water, retaining structures (liner, rocks and grass) be respected and maintained by all athletes and spectators throughout the course of the event. We appreciate your cooperation!

There is a 1/3 mile uphill walk to the swim start. Feel free to leave a pair of shoes to run back to transition in. Any leftover clothes/shoes will be donated to charity following the race.

Top of Delaware Duathlon Run #1_2.5K



Top of Delaware Triathlon Bike Course (11.6 Miles)



Top of Delaware Triathlon Run Course (3.1 Miles)

The Top of Delaware run course takes athletes back up to the paved loop surrounding the reservoir. Runners complete one loop around the top, then reverse course back to the finish line for a 3.0 mile run.

