



Dear Athlete,

It is with great pleasure that we welcome you to the Liberty University Triathlon. Our team and Smith Mountain Lake State Park have some great racing in store for you and hope you are excited. To have the absolute best day possible, please take a moment to read through the following materials, double check the course maps, parking and briefing details in your email and posted online. With several events throughout the day, we want to make sure your day goes as smoothly as possible.

This year we are very excited to host the NCAA Women's Triathlon East Regional Qualifier and would like to take this opportunity to thank all the NCAA athletes, coaches and families for making their way across the country to race with us, we are happy you are here.

Training for a triathlon, whether it being your first or twentieth, is a challenging endeavor and we know you have worked hard in the weeks and months leading up to this event. Getting to the starting line is a success in and of itself. We hope to make your race day experience positive and fun while helping you to achieve your athletic goals. The rest of the team and I thank you for being here and will be doing everything possible to help you reach the finish line. If you have any questions, concerns, or feedback, please do not hesitate to let us know.

Greg Hawkins
Kinetic Multisports

Race Site Address

Smith Mountain Lake State Park
Swim Area Pavilion (Race Site)

1235 State Park Road
Huddleston, VA 24104-9547 | [Directions](#)

Schedule of Events

Friday October 19th, 2018

4:00pm Course Preview

5pm: Mandatory NCAA Athlete Briefing & Check In @ Race Site located at the Beach Pavilion

5-7pm: Packet Pickup – Athlete Check In @ Race Site located at the Beach Pavilion

6pm: Olympic Pre-Race meeting @ Race Site located at the Beach Pavilion

Saturday October 20th, 2018: Race Day

****Arrival Time: Road Closures In Effect:** *To ensure the safety of our Draft Legal athletes, the main road to packet pick up at the race site will be closed at **8:00AM** Sharp on race day (Saturday). All athletes and spectators need to be inside the park at this time. We recommend getting to the race site no later than 7:30AM. Cars will be allowed in/out at the discretion of race management.*

7:00am: Transition areas open

7:00am: Packet pickup, Body Marking/Chip Pick-up

7:30am Swim warm up starts

7:45am: NCAA Transition area closes (no exceptions)/NCAA Pre-race meeting (swim start)

7:55am: Athletes to swim start & introduction

8:00am: NCAA Starts

9:00am: Collegiate Draft Legal Transition Area Closes

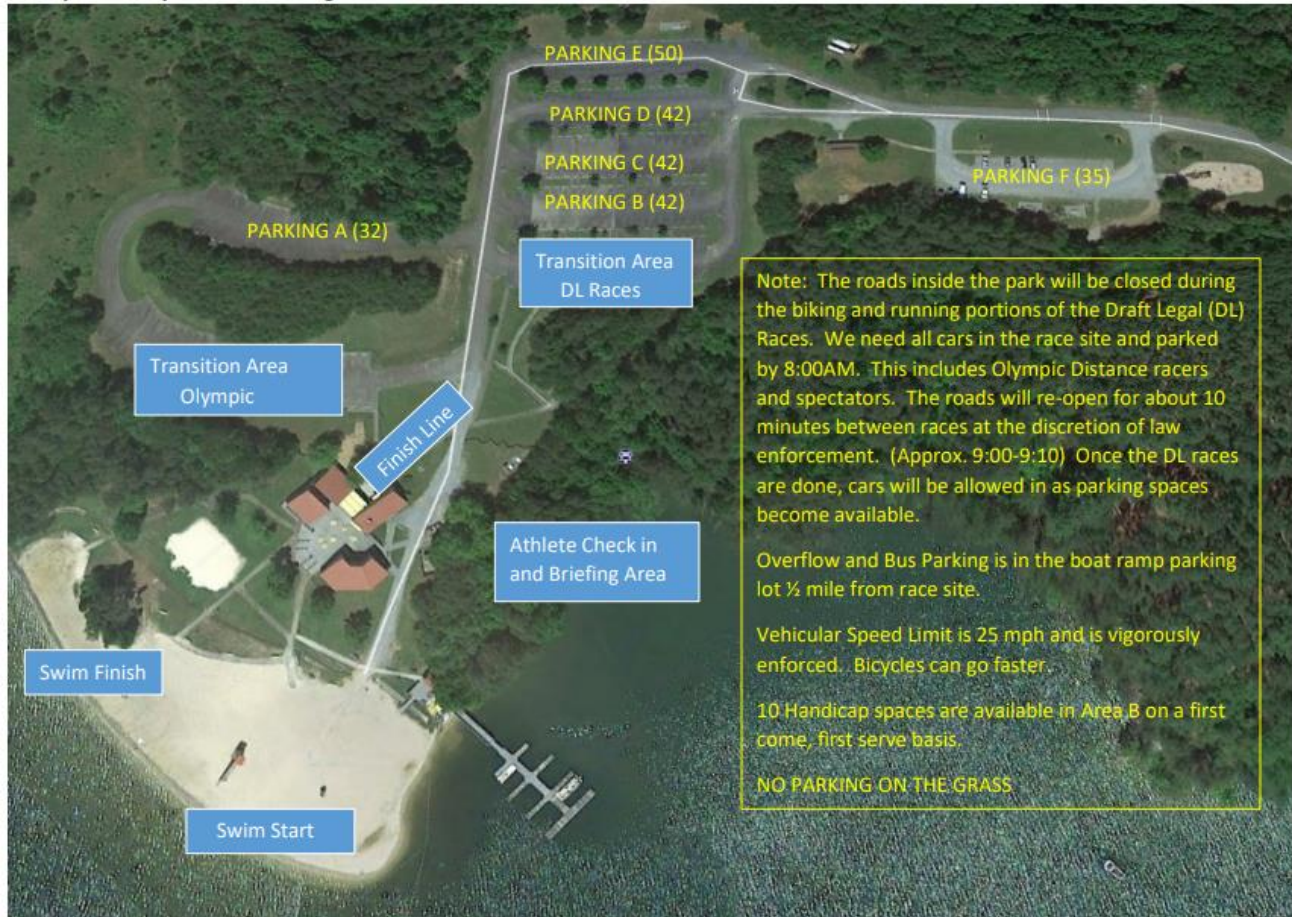
9:15am: Collegiate Draft Legal Race Start

9:45am: Olympic Distance Triathlon Transition Area Closes

10:00am: Olympic Distance Triathlon Race Start

Parking & Race Site Layout

Liberty University Triathlon Parking



Parking is available inside the marina or outside the marina on a gravel road. If you need to leave prior to the race ending, park on the gravel road. DO NOT park on the main road leading into the marina as this portion of the roadway is used for the bike and run course, as well as a means of getting emergency vehicles in and out of the race venue. Should inclement weather create unsafe parking conditions on the fields, please follow the directions of our parking volunteers.

Packet Pickup

Things to bring with you to Packet Pickup:

- **Photo ID:** this is REQUIRED! No ID = No Race!!!
- **Know your bib number.** It will be emailed out and posted on the race participant list. (see the race website).
- **Questions!**

Special notes about Packet Pickup:

- **Adults:** Each adult must pick up their **OWN** race packet.
- **Minors:** Those under the age of 18 years old MAY have their parent/guardian pickup their packet.
- **Swim start times:** Start times will be posted by last name and by bib number. Times are final.
- **Timing Chips:** You will receive your timing chip on race morning NOT at packet pickup. Please see the Timing Chip section for more information.

Course Cut-Off Times

We expect each athlete competing in this event to be properly trained to complete it within the cut off times. Participants who do not meet these cut-offs will be asked to turn in their timing chip. Finishing the race at this point is at the discretion of each athlete, but race support will no longer be provided and Kinetic Multisports holds no responsibility for athlete safety after this point.

Olympic Distance:

Athletes have 4 hours to complete the entire event. Cumulative cut-offs will be:
Swim: 1 hour | Bike: 3 hours | Run/Finish: 4 hours

Draft Legal Races:

Standard draft legal timelines and lap rules apply.

Transition Area

Triathletes may enter the transition area at 6:30am. All bikes must be racked 15-minutes before the start of the race. Bike racks are numbered, and triathletes must put their bicycles and gear on their designated rack.

Each rack holds 6 bikes, with positions on racks being based on a first come, first serve basis. To the right is an example of how your transition area should be organized. Please be courteous of the space and belongings of other racers before, during, and after the race.



Transition Security: Please note that once your race is over, many others are still racing. We will be allowing athletes into the transition area to get their bikes and other gear when possible. Be considerate of others still racing.

Body Marking

After racking your bike, proceed to the body marking area located near the Packet Pick Up & Transition Area. (marked by a tear drop flag). Triathletes must be marked at least 30 minutes before the race and must bring their bib number for verification. **You MUST have your BIB to get body marked!**

Race Numbers

Each athlete will receive three race numbers:

1. The smallest number (sticky) must be worn on the front of the cycling helmet.
2. The number with 4 holes is to be worn on the front of the body during the run and when crossing the finish line.
3. The number with 2 numbers together is to be folded over the top tube or seat post of your bicycle. It is self-adhesive.

Please refer to the Kinetic Multisports website under Novice Athletes for more information on number placement.

Note: This page does not apply to the Draft Legal Races.



Timing Chips

Please be aware of the following procedures to insure successful timing of your event:

- All participants will receive their ChampionChip on Race Morning at the Chip Pick-Up Tent. You are **REQUIRED** to show your paper bib number in order to receive your timing chip. Body marking is **NOT** an acceptable Bib number!
- Along with the timing chip participants will receive a neoprene chip strap. It is **REQUIRED** that all participants wear the timing chip on their **LEFT** ankle as shown.
- **You MUST RETURN YOUR CHIP at the finish line. Athletes who lose their Chip or fail to return the chip after the race will be assessed a \$30 charge!**
- **IF YOU ARE NOT ABLE TO FINISH ANY LEG OF THE RACE YOU MUST TURN IN YOUR TIMING CHIP BEFORE CROSSING OVER ANY ADDITIONAL TIMING MATS. IN THIS EVENT TAKE YOUR TIMING CHIP TO THE TIMING CHIP COLLECTION AREA NEAR THE FINISH LINE AND INFORM THEM OF YOUR DECISION.**



Aid Stations

Bike: **NO** aid stations on the bike course

Run: Aid stations will be approximately every mile on the run course and will have Gatorade & water.

Post-Race Food

All racers will receive post-race food to include a Meal, Fruits, Snacks, and various drinks. Please remember that the post-race food & drinks are for the athletes only.

Race Results & Awards

Tentative results will be posted as they come available on race day located in the Results Tent!

USAT penalties will also be posted inside the results tent by USAT officials as soon as they are available race day. They will be posted on the results page of the website under the category results as well.

Questions or concerns about USAT penalties can be directed towards the USAT Official who will remain at the race site until after the awards ceremony.

Questions about results can be directed towards the race timer or race director usually located near the finish line.

If you cannot make the awards ceremony, please have a friend pick up your award. Final results with splits will be posted on kineticmultisports.com as soon as possible, usually within 24 hours.

USAT Rules

USA Triathlon is the national governing body for the sport of triathlon. Being an annual member or a one-day member provides event organizers and participants with the necessary liability insurance coverage. For information, please contact USA Triathlon [HERE](#).



USAT's Most Commonly Violated Rules:

Helmets

Helmets **MUST** be worn with the chin strapped anytime you are riding your bike, before, during and after the event. **Penalty:** Disqualification

Outside Assistance

Only race and medical officials may provide assistance to athletes during the race. Staff & Volunteers are considered officials. **Penalty:** Variable time penalty

Drafting Olympic Distance Race Only

Keep at least three (3) bike lengths of clear space between you and the cyclist in front. If you move into the zone, you must pass within 15 seconds. **Penalty:** Variable time penalty

Position & Blocking Olympic Distance Race Only

You must stay on the far-right side of the road at all times unless passing another rider. Riding on the left without passing is considered blocking. **Penalty:** Variable time penalty

Overtaken Olympic Distance Race Only

Once passed, you must exit the drafting zone to the rear before attempting to re-pass. **Penalty:** Variable time penalty

Race Numbers

All athletes must wear their run bib number at all times during the run, and have it facing the front (on their chest, stomach or shorts) as they cross the finish line. **DO NOT** transfer your number to any other athlete or take a number from an athlete that is not competing.

Penalty: Variable time penalty for missing or altered number, Disqualification and one year suspension from membership in USAT for transferring a number without race director permission.

USA Triathlon Women's Collegiate Draft Legal Triathlon Athlete Checklist [HERE](#)

USAT Aging Up Policy

Participants will compete in whichever age group they would be in as of December 31st. In other words everyone's age group for the season will be determined by their age on the last day of the year of the race.



www.storevtsmts.com

Cowbells



Race Belts



Headwear



Clothing



Water Safety

Water Temperature

The typical water temperature for the swim is usually in the 60s this time of year, you should be prepared for upper 50's to low 60's this time of year at Smith Mountain Lake.

The water temperature for each open water event is taken and posted on the Kinetic Multisports Facebook page, 36-48 hours before the posted packet pick-up time. This temperature reading is a preliminary reading. The official water temperature to determine wetsuit eligibility will be taken on race morning about 60—90 minutes prior to race start by the USAT official on site.

Wetsuit Rules

Kinetic Multisports abides by USAT cutoffs concerning water temperature and wetsuit eligibility:

78°F or below: Wetsuits ARE Allowed

78.1°F to 83.9°F: Participants may wear a wetsuit at their own discretion; however, wearing a wetsuit in this temperature range will mean that the athletes are ineligible for awards. Wetsuit wearers results will be located in the category results in a Wetsuit section and not in the Overall results.

84°F and above: wetsuits are NOT permitted—this is for your own safety.

Water Safety

Lifeguards will be available throughout the swim course to ensure your safety. If you need assistance, roll on your back and put your hand straight in the air to signal a lifeguard to your assistance. You may hold on to a lifeguard's surfboard or kayak but using a lifeguard for forward progress will result in a DQ.

In the case of strong water currents, please keep aware of your surroundings and sight for buoys frequently.

If for whatever reason you do not finish the swim it is mandatory that you immediately check in at the finish line tent and report that you DNF'ed (Did Not Finish) the swim.

A yellow wiggly man will mark the exit of the swim. Be sure to sight for the wiggly man in the final straightaway of the swim.

Race Site Layout

Liberty University Triathlon Parking



Swim

Official swim start times will be posted on the website 48hrs before the event, at packet-pickup and on race-day.

- The swim diagram is posted on the [Liberty University Triathlon](#) page of the Kinetic Multisports website, scroll down to see the swim course.
- Swim caps will be provided at Open Water Swim Events at Packet Pick Up. Please wear the designed color of your swim wave.
- Participants will start in age/category specific waves, be sure to Start IN YOUR WAVE TIME!
- Be prepared to line up for the swim start a minimum of 10 minutes before your wave starting time.
- Official swim wave times will be posted on the Event website 48hrs in advance and will also be posted at packet-pickup and race morning.

- Orange oval buoys are guide buoys—go straight, while the Yellow triangular buoys are turn buoys. Please review the swim course before the race. Knowing the course is ultimately YOUR responsibility.

Bike

- The bike course map is posted on the [Liberty University Triathlon](#) page of the Kinetic Multisports website, scroll down to see the bike course.
- The course will be marked with orange spray chalk arrows and Yellow signs with arrows at all the turns. The bike will also be marked with signs every 5 miles.
- Though there will be police presence on the course for your safety, the course is still open to traffic please BE ALERT and BE CAREFUL!
- Volunteers will be at all corners wearing bright yellow shirts and orange vests, holding orange flags.
- It is highly recommended you pre-ride or pre-drive the course. Knowing the course is ultimately YOUR responsibility.

Rules & Etiquette

- You MUST wait to mount your bike until AFTER you cross the mounting line outside of transition. Likewise, you MUST dismount your bike BEFORE crossing the line at the end of the bike.
- No drafting unless you are in the draft legal race(collegiate only), no headphones/iPods/radios. USAT officials will be on the course and penalties will be assessed (see previous section on USAT rules).
- Hard shell helmets must be worn and must be fastened before mounting your bike outside the transition area. Failure to fasten your helmet results in an automatic DQ.
- Stay to the right to allow faster cyclists to pass on the left and obey the yellow line rule.
- Crossing the yellow line is an automatic DQ.

Run

- The run course map is also posted on the [Liberty University Triathlon](#) page of the Kinetic Multisports website, scroll down to see the run course.
- The run course is an out and back course and is on the road.
- Aid stations will be located approximately every mile on the run.

Rules & Etiquette

- No headphones, earphones or any radio-type devices will be allowed.
- You MUST have your run bib number on your FRONT as you approach the finish line.
- Please be sure to return your timing chip to designated volunteers after crossing the finish line...CONGRATULATIONS YOU DID IT!