



Culpeper Gran Fondo Aid Station Guide

The purpose of this guide is to let you know what to expect on the course during the course of your ride on Saturday. There are 5 aid stations located every 15-20 miles throughout the course. Some you will be able to stop at multiple times. We have each of the stations open using a 10 mph average speed. So, if you ride at 15 mph, but stop at each aid station for 30 minutes, you will miss some of the later aid stations. Please keep that in mind.

We will have mechanical support on the course and at each aid station. If you need a ride back, stop at the aid station and our team will bring you in or you can call our race hotline (757-570-9934). If you have a medical emergency, dial 911. EMS is on standby throughout the region.

Remember, ***this is a ride, not a race.*** You are expected to obey all traffic laws, ride single file and on the right hand side of the road. Have a great ride and we will see you back at beautiful Mountain Run Lake Park.

Aid Station	Open	Close
#1 – Reva Rd	8:00AM	3:00PM
#2 – DuCard Vineyard (Etlan)	8:30AM	11:30AM
#3 – W. Hoover	9:00AM	2:30PM
#4 – Good Hope Ch.	10:00AM	1:00PM
#5 – Oak Park	10:30AM	2:30PM
Start / Finish	7:30AM	3:30PM

Aid Station 1: 15999 Reva Rd – Mile 8.5



-Located at 15999 Reva Road. -This is 8.5 miles into the ride for all distances and miles 24.5, 53.5 and 93.2 for the 32, 62, and 102 mile routes.

-Aid Station 1 will be supporting athletes from 8:00AM to 3:30PM.

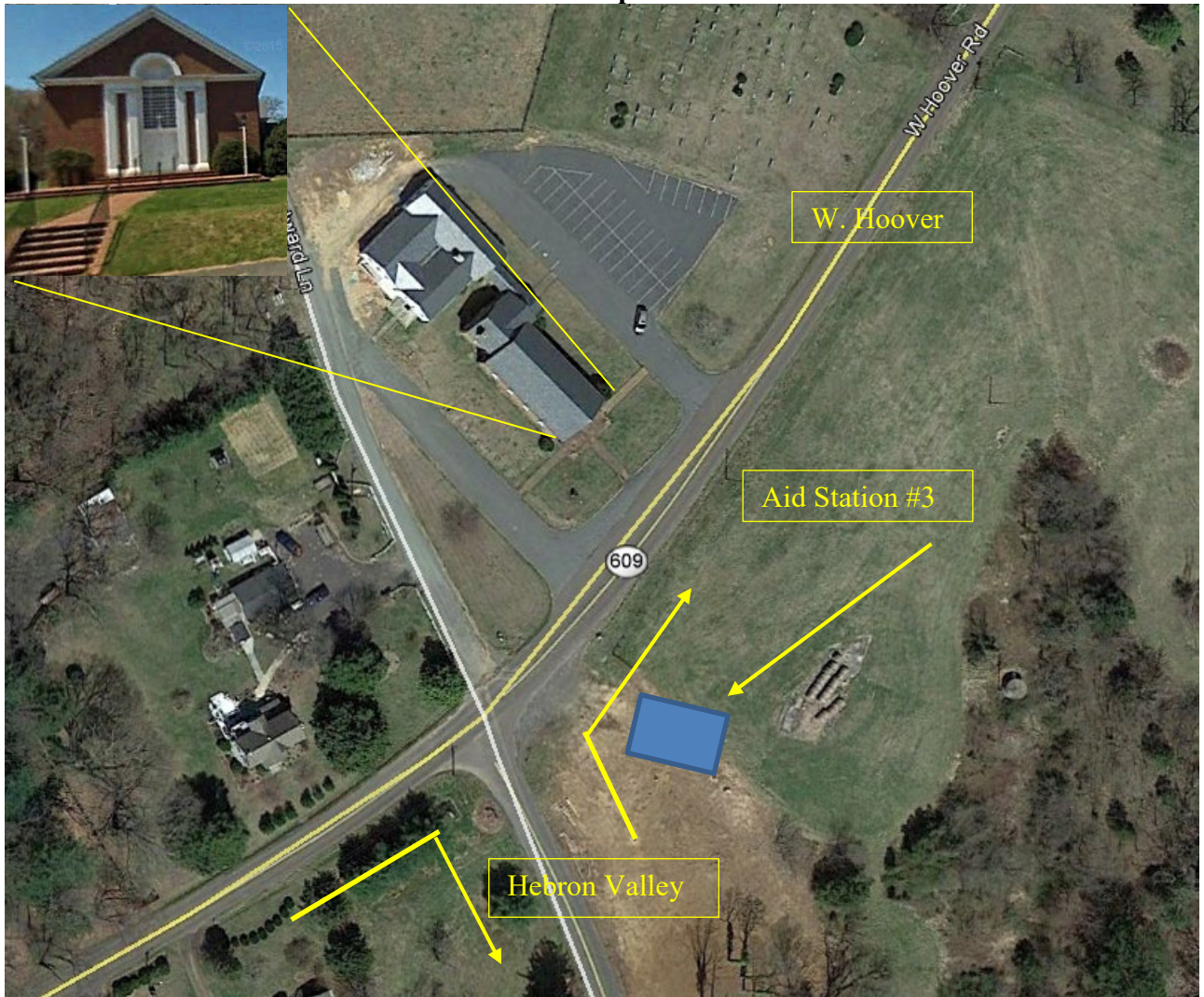
-BBQ is being served at the race site from 9:30AM to 4:00PM (*be sure to eat!!!*)

Aid Station 2: DuCard Winery – 40 Gibson Hollow Lane – Etlan, VA 22719



- The DuCard Winery Aid Station is located at mile 25.6 of the 62 and 100 mile routes.
- It is approximately 1.8 miles after the turn from Rt. 231/FT Valley onto Etlan Rd.
- Aid Station #2 will be supporting athletes from 8:30-11:30AM.
- BBQ is being served at the race site from 10:30AM to 4:00PM.

Aid Station 3 – Located at Mt Carmel Baptist Church – 1735 W. Hoover Rd



-Located at Mt. Carmel Baptist Church, 1735 W. Hoover Rd in Madison, VA. This station is 1.7 miles East of the intersection of 231 and W. Hoover Rd and at the intersection of Hebron Valley and W. Hoover Rd.

-This is mile 18 for the 32, 34.8/43 for the metric, 34.8/83.6 the full century rides-Aid Station 3 will be supporting athletes from 9:00AM to 3:00PM.

-BBQ is being served at the race site from 10:30AM to 4:00PM

Aid Station 4 – Good Hope Baptist Ch. -2930 Beautiful Run Rd – Radiant, VA 22732



-Located at Good Hope Baptist Church – 2930 *Beautiful Run Rd* – Radiant, VA 22732, at the intersection of Beautiful Run and Good Hope Ch/Locust Grove Ch Rd. This is 1.9 miles SE of the Orange Rd/Good Hope intersection.

-This is mile 47.8 for the century riders.

-Aid Station 4 will be supporting athletes from 10:00AM to 1:00PM.

-BBQ is being served at the race site from 10:30AM to 4:00PM

Aid Station 5 – 6097 Oak Park Rd – Oak Park, VA 22730



-Located on a farm on Oak Park Rd, opposite of 6097 Oak Park Rd – Oak Park, VA 22730
-0.6 miles east of the intersection of Ely Rd, and 0.25 miles west of the post office on Oak Park Rd.

-This is mile 63.75 for the century riders.

-Riders will proceed 0.65 miles East on Oak Park Rd (634) and turn left on Beahm Town Rd (632)

-Aid Station 5 will be supporting athletes from 10:30AM to 1:45PM.

-BBQ is being served at the race site from 10:30AM to 4:00PM