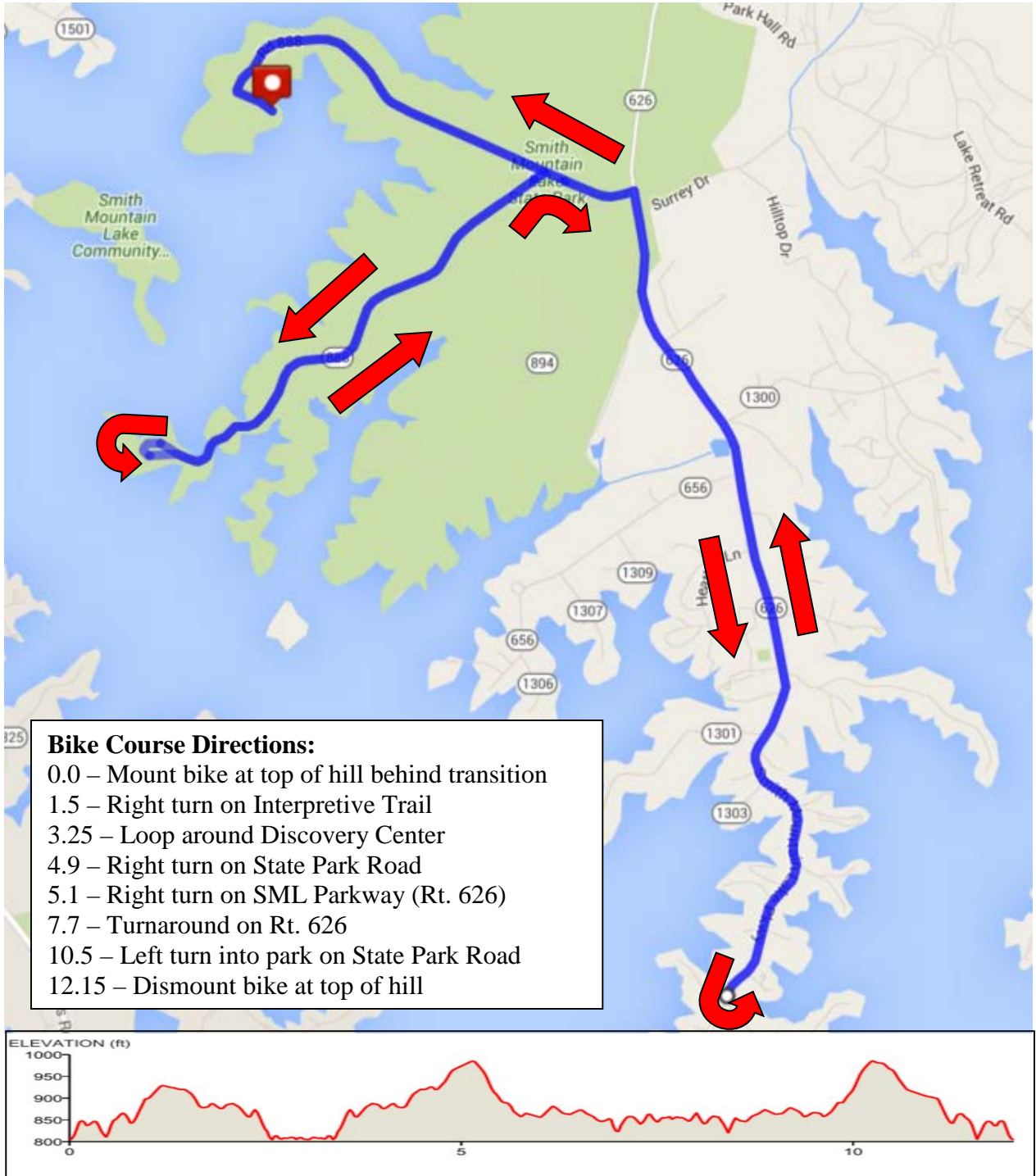


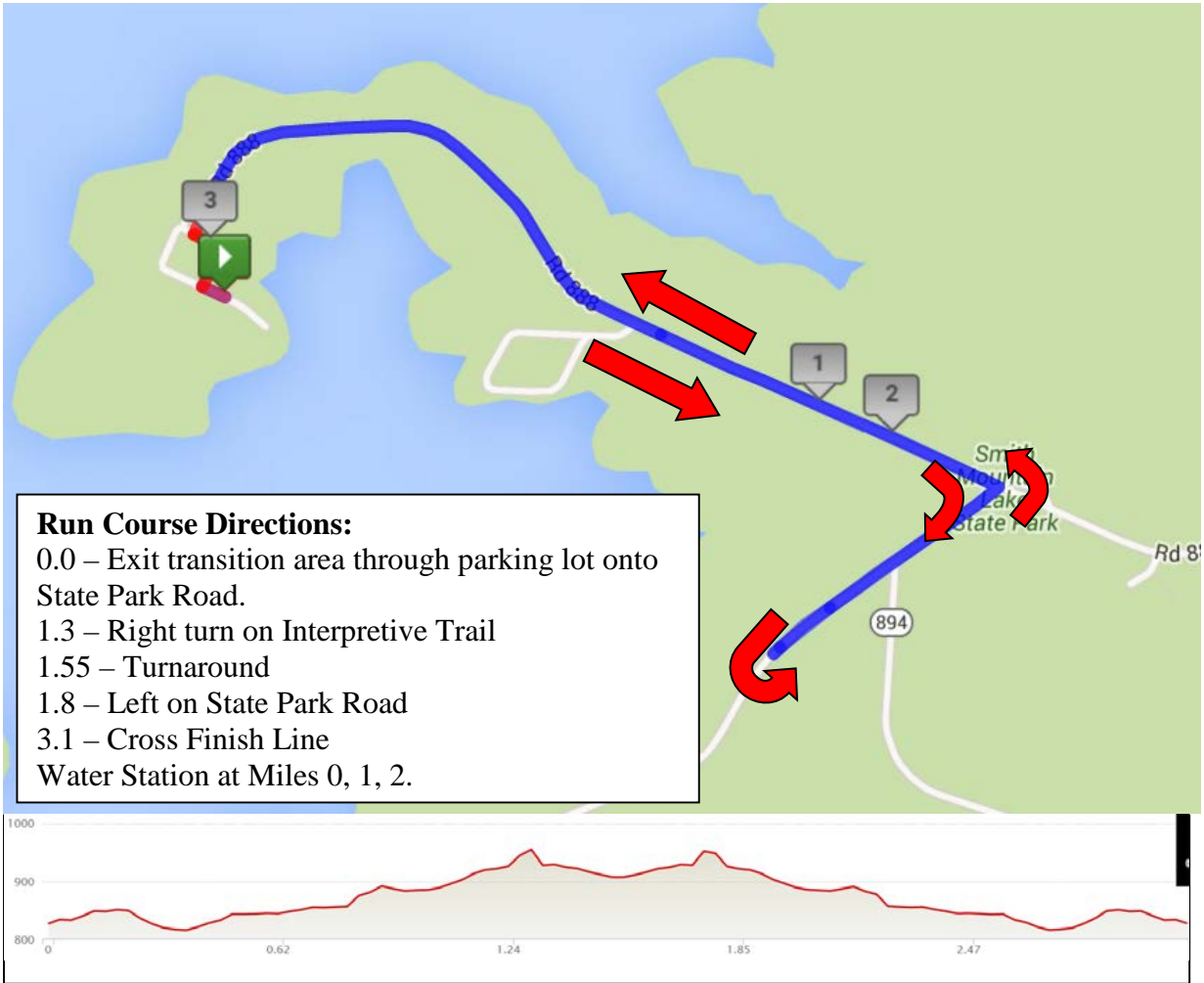
Smith Mountain Lake Triathlon Swim Course: 750 Meters



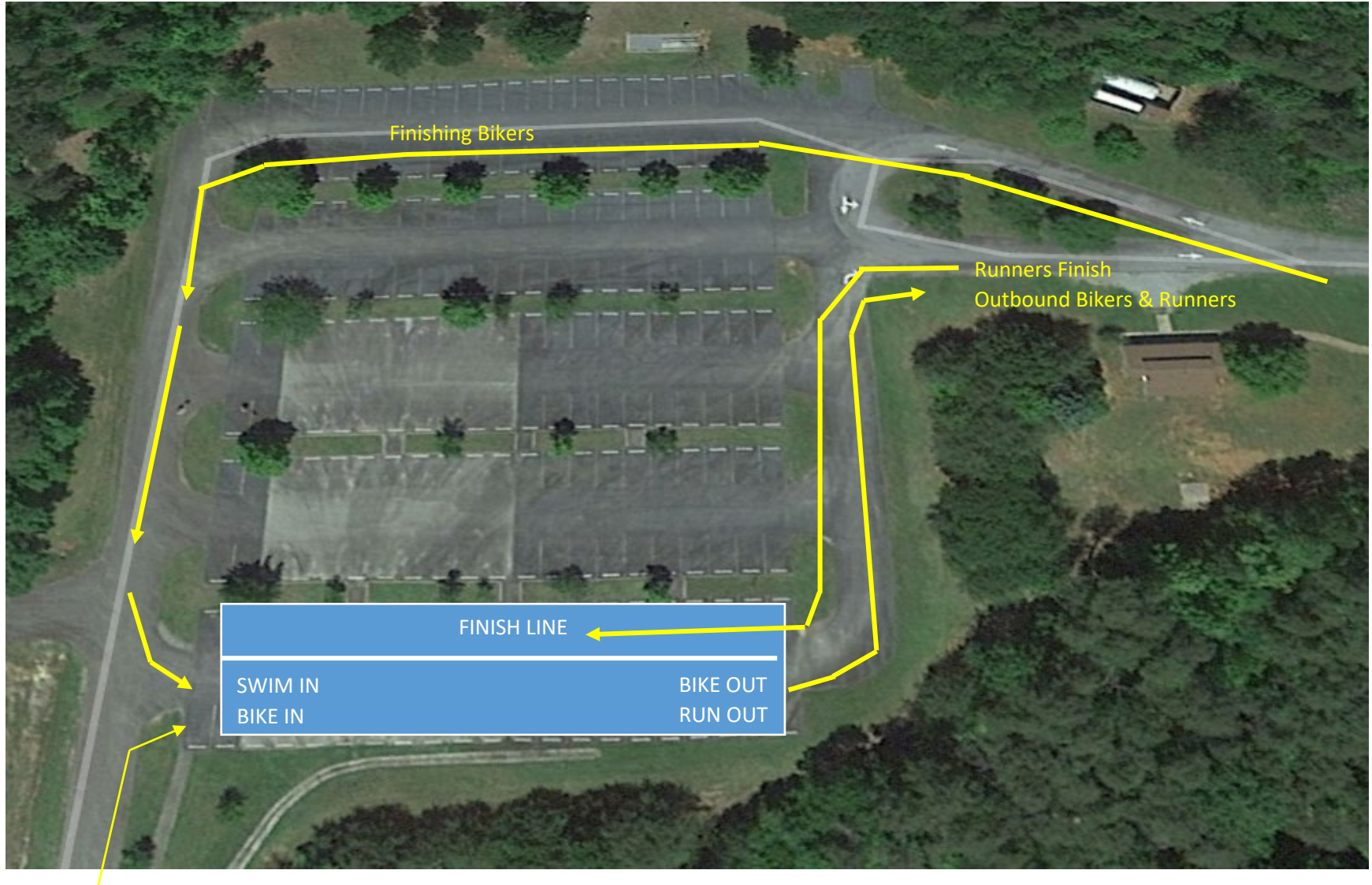
Smith Mountain Lake Triathlon Bike Course: 12 Miles



Smith Mountain Lake Triathlon Run Course: 3.1 Miles



Smith Mountain Lake Triathlon Site Layout



Smith Mountain Lake Triathlon Parking



Note: The roads inside the park will be during the race with bikers and runners. We encourage ALL SPECTATORS to arrive prior to race start.

Overflow and Bus Parking is in the boat ramp parking lot ½ mile from race site.

Vehicular Speed Limit is 25 mph and is vigorously enforced. Bicycles can go faster.

6 Handicap spaces are available in Area A on a first come, first serve basis.

NO PARKING ON THE GRASS