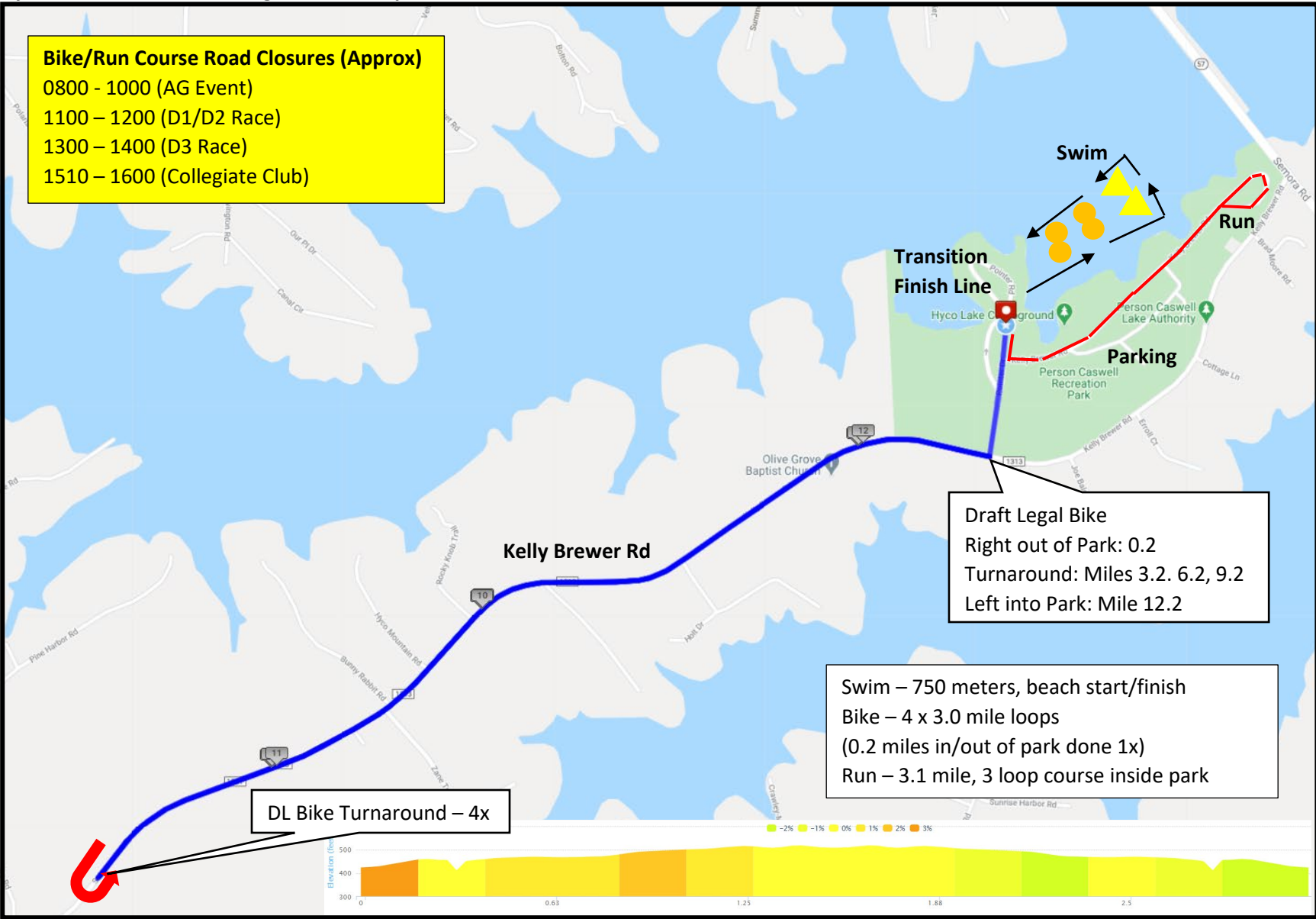


# Hyco Lake Triathlon Draft Legal Course Map

**Bike/Run Course Road Closures (Approx)**  
 0800 - 1000 (AG Event)  
 1100 - 1200 (D1/D2 Race)  
 1300 - 1400 (D3 Race)  
 1510 - 1600 (Collegiate Club)



**Draft Legal Bike**  
 Right out of Park: 0.2  
 Turnaround: Miles 3.2, 6.2, 9.2  
 Left into Park: Mile 12.2

Swim – 750 meters, beach start/finish  
 Bike – 4 x 3.0 mile loops  
 (0.2 miles in/out of park done 1x)  
 Run – 3.1 mile, 3 loop course inside park

DL Bike Turnaround – 4x